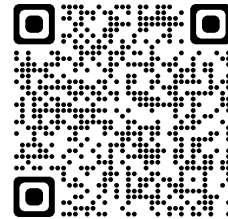
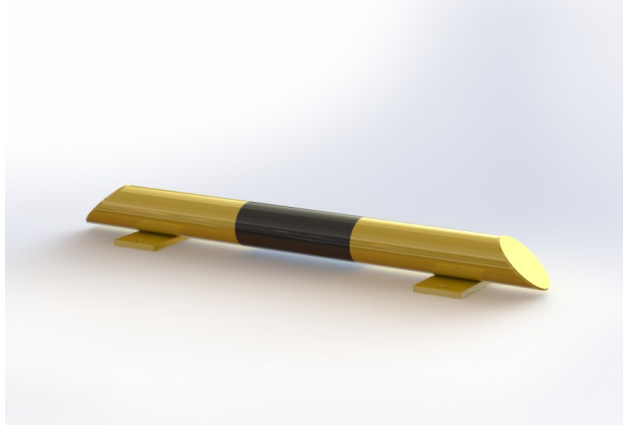




## Technical sheet



### Low level protection barrier – DP OW02

#### PROPERTIES:

**Material:** steel

**Colour:** yellow / reflective black

**Handling equipment:** electric pallet jack

**Impact resistance:** increased

**Diameter:** 76 mm

**Length:** 800 mm

**Height:** 86 mm

**Wall thickness:** 3 mm

**Foot dimension:** 150 × 75 × 10 mm

**Weight:** 6 kg

**Surface treatment:** powder paint

**Suitable use:** indoor and outdoor areas

#### PRODUCT DESCRIPTION:

The low level protection barrier is made of S235 steel. Surface treatment is solved with powder paint. Yellow traffic colour RAL1023 increases the visibility of the barrier and warns of obstacles, which contributes to greater safety. The steel feet of the barrier are made of 10 mm thick sheets. Fixing holes Ø 14 mm. The barrier has black reflective stripes.

#### USE:

The low level protection barrier defines the space for the movement of hydraulic handling equipment, pallet trucks and sack trucks. The low level protection barriers are designed to protect machines and equipment in production halls and warehouses.